

Thank you for purchasing **FSA120 EJX-MV Configuration DTM**.

This document is intended to guide users what to do after receiving the software package.

Please carefully read this document first when you receive the package and follow the instructions.

I. Receiving the Package

Soon after you receive the package, please open it and confirm that following items are included in the package.

- **CD-ROM 3 pieces**
 - FieldMate disk (Basic or Advance, as specified in order)
 - Device Files disk
 - EJXMVTool Additional Resource disk
- **Paper Document**
 - Read Me First (IM 01C25R51-10E) <This document>
 - FieldMate User license sheet
 - EJXMVTool User license sheet
 - EJXMVTool License Agreement
 - FieldMate Versatile Device Management Wizard Getting Started (IM 01R01A04-01E)
 - FieldMate Operational Precaution (IM 01R01A01-91E)

II. To start with

- 1) Before starting any operation, please carefully read the instructions in the user's manual of FSA120 and obtain necessary knowledge about installation and operation of the software.

The User's manual "FSA120 EJX-MV Configuration DTM"(IM 01C25R51-01E) is provided as a Portable Document Format (pdf) file in the CD-ROM labeled "EJXMVTool Additional Resource Disk", and is located at <Yokogawa MVTool Additional resource Disk CDROM>:\EJXMVTool_Manual.pdf.

Set the Additional resource disk in the CD-ROM drive of your computer and double click the name of the file.

To read the file in PDF format, Adobe Reader is required.

If Adobe Reader is not on your PC, install it. This can be done by setting the FieldMate disk in the CD-ROM drive of your computer and double clicking on;

< FieldMate CDROM>:\READER\ENGLISH\AdbRdr80_en_US.exe in Windows Explorer.

- 2) FSA120 is the DTM software utilizing FDT/DTM technology. To use this software, a frame application is required. 'Field-Mate' is bundled with this software package as Yokogawa standard frame application. The quality, operability of EJXMVTool are certified for use with FieldMate only. Please use 'Field Mate' as frame application. Also, you can use Field communication server included in FieldMate as an communication DTM.

For the installation and operation of FieldMate, please refer to the printed document "FieldMate Versatile Device Management Wizard Getting Started" (IM 01R01A04-01E) and "FieldMate Operational Precaution" (IM 01R01A01-91E). For the details of installation and operation, please also refer to the user's manual of FieldMate in pdf format which is stored in the FieldMate CDROM.

Table 1. List of User's Manual

Applicable software	Name	media	Location
EJXMVTool	FSA120 Read Me First (IM 01C25R51-10E)	paper	Included in the package
	FSA120 EJX-MV Configuration DTM (IM 01C25R51-01E)	pdf file	Included in Additional Resource disk
FieldMate	FieldMate Getting Started (IM 01R01A04-01E)	paper	Included in the package
	FieldMate Operational Precaution (IM 01R01A01-91E)	paper	Included in the package
	FieldMate Online COMM DTM Function (IM 01R01A05-01E)	paper	Included in the package
	FieldMate Versatile Device Management Wizard (IM 01R01A01-01E)	pdf file	Included in FieldMate disk

III. Installation Flow

Followings are the flow of standard installation. As the procedures may differ according to the condition, please find details in each designated manual and follow the instructions.

- 1) Uninstall incompatible software (if any).
- 2) Install FieldMate and Device Files.
- 3) Install Additional Resource Disk.

Note: If you update from EJXMVTool DTM R1.02.00 or R1.02.01, the log file is saved to the following location.
<DTMInstDrive>\Program Files\Yokogawa\DTMs\EJXMVToolFF

- 4) Register yourself in FieldMate with using information on the License sheet.
- 5) Start FieldMate.
- 6) Start DTM works.
- 7) Activate EJXMVTool by entering your licence number on the License sheet.

IV. Important Notice on Flow Configuration Wizard

• Supplemental explanation regarding Apply button

When you click the Apply button, the flow parameters are temporarily saved to an offline database on your PC. To download the flow parameters to the device, set "Download to Device" in the Offline Parameter screen. For basic information on the procedure for downloading flow parameters to the device, refer to [Appendix A](#).

V. Software Version

Following is the information of the software version of the package and each software included in the package. For the latest information of software version/revision, please see the web site of FieldMate.

For how to confirm version/revision of the software, please refer to the subsection 4.2.6 of IM 01C25R51-01E.

FSA120 package	Additional Resource Disk	FieldMate	Yokogawa DTM Library	EJX910DTM
R1.02.00	R1.02.00	R1.02.10	HART 2006-3 FF 2006-1	HART 1.4.124.19 FF 1.1.15.14
R1.02.01	R1.02.01*	R1.02.10	HART 2006-3 FF 2006-1	HART 1.4.124.19 FF 1.1.15.14
R1.02.02	R1.02.02	R1.03.00	HART 2008-1 FF 2008-1	HART 1.4.124.16 FF 1.2.64.89

In this manual, following abbreviation is used, FF for FOUNDATION™ Fieldbus.

*: The version number on the CD-ROM shows R1.02.01.

On the other hand, the version number on the “Add/ remove program” screen of Windows Control Panel remains to show R1.02.00 even if the update files are installed.

To confirm whether the latest EJXMVTool R1.02.01 is correctly installed in your PC, please check the version number of Flow Configuration Wizard. Refer to 6.2.5 in IM 01C25R51-01E.

VI. Information Provision Web Site

For FieldMate and/or PRM users, the user's web site has been already in operation as follows:

<https://voc.yokogawa.co.jp/PMK/Top.do>

The EJXMVTool category within the above web site provides the latest software operation environment supporting information such as documents and update programs.

After registration of FieldMate user, you can find an EJXMVTool menu by clicking the information icon on the top menu. Entering your EJXMVTool license number allows you to access the information menu for EJXMVTool.

Menu / Information

Information

Please choose the type of information you would like to download.

Information on Equipment	You can download the Comprehensive Equipment File, the Individual Equipment File and Others in this information on equipment.
FieldMate	You can download Revision information, software troubleshooting information, software, and documents on FieldMate.
EJXMVTool	You can download Revision Information, software troubleshooting, information, software, and document on MVTool.

Revision Record

January 2007/1st Edition

April 2007/2nd Edition

August 2007/3rd Edition

February 2008/4th Edition

Newly published.

Add Important notice regarding flow configuration wizard.

Delete Important notice regarding the setting of External temperature and Pressure.

Add the additional installer to update R1.02.00 to R1.02.01.

Add “VI. Information Provision web Site” for EJXMVTool

Revise the information of FieldMate components.

Delete the additional installer to update R1.02.00 to R1.02.01

Appendix A Downloading Flow Parameters to the Device

The basic procedure for downloading the flow parameters to a device is as follows.

STEP1: Upload from Device

Perform "Upload from Device" in the Offline Parameter screen so that the setting parameters in the device are saved to the offline database on your PC.
The parameters will then be displayed in the Offline Parameter screen.

STEP2: Flow Parameter Configuration

Perform flow parameter configuration in accordance with the guidance in the FCW.
Save the flow parameters as an XMV file in the last menu, and click the Apply button.
The flow parameters are then stored to the offline database on your PC.

Note: Clicking on Apply does not download the flow parameters to the device.

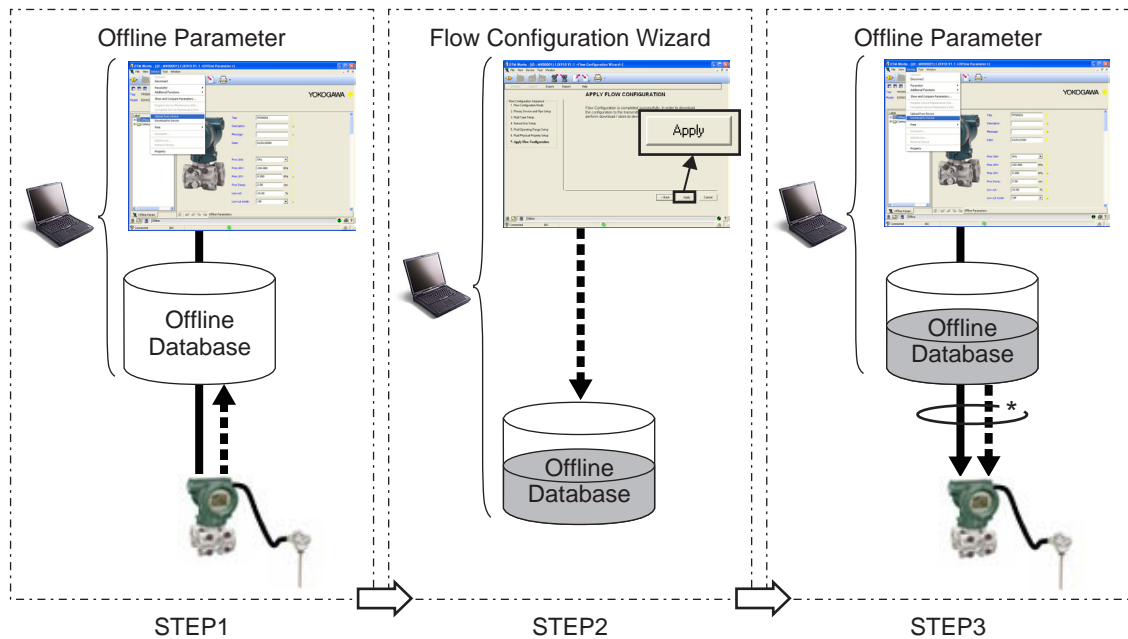
STEP3: Download to Device

Perform "Download to Device" in the Offline Parameter screen. The flow parameters will then be downloaded together with the general parameters to the device.



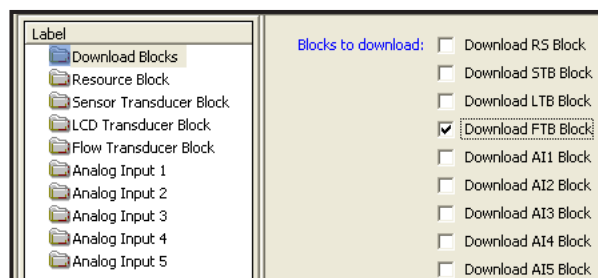
IMPORTANT

For FOUNDATION fieldbus, FTB block must be checked on the "Download blocks" menu in the Offline Parameter screen to download Transmitter Flow parameters set by Flow Configuration Wizard.



—————> : General parameters
- - - - -> : Flow parameters

* : To download the parameters to the device for EJX910 FF DTM, parameters are downloaded in accordance with the following checkbox on the "Download blocks" menu in the Offline Parameter screen.



"Download blocks" menu in Offline Parameter screen

Figure A-1 Procedure to download the parameters to the device